

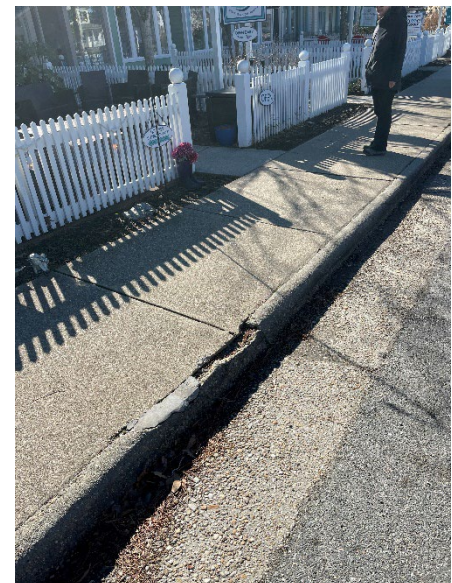
Item 1 – Curb on King Carter Drive between Hope and Glory Inn and Methodist Church has deteriorated, as has the concrete around stormwater drain manhole to the right of the parking lot entrance



Item 2 – Sidewalk has sunk on either side of hatch doors outside Office Bistro at 4346 Irvington Road. Someone has put cold patch as a “ramp” across the hatch doors...to attempt to mitigate the tripping hazard.



Item 3 – Deterioration of curb in front of The Local at 4337 Irvington Road



Item 4 – Sidewalk has Deteriorated in front of ETB Consulting, 4395 Irvington Road



Item 5 – Start of deterioration of curb in front of Ramsey and Bugg at 4421 Irvington Road



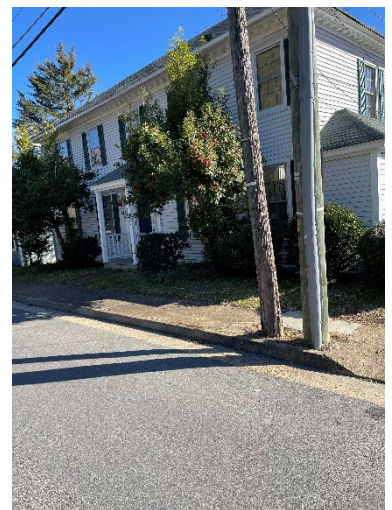
Item 6 – Deterioration of curb in several locations between gas station at 4525 Irvington Road and the Post Office



Item 7- Sunken or Missing sidewalk section after installation of new power pole, some time ago. This is on the east side of Steamboat Road, near the intersection of Irvington Road.



Item 8 – Heaved sidewalk section in front of 245 Steamboat Road, next to power pole. Tripping hazard



Item 9 - Sidewalk heave, likely due to root activity at 242 Steamboat Road



Item 10 – Deterioration of curb corner, 140 Steamboat Road



Item 11 – Both curb corners deteriorated at entrance of Bussels Lane at the next to 116 Steamboat Road



Item 12 – Major sidewalk and curb heave at 60 Steamboat Road



Examples of sidewalks which cannot be navigated by wheelchairs or mobility scooters, mostly on driveway cuts on Irvington Road and Steamboat Road

